

Restoring Pennsylvania's Keystone Markers

The Keystone Marker, with its ornate pole and brilliant blue and gold keystone, once graced the entrance to the vast majority of Pennsylvania's towns, villages, creeks, rivers, and trails. In the few places where they survive, they define and reflect a character that is purely local, but perfectly Pennsylvania.

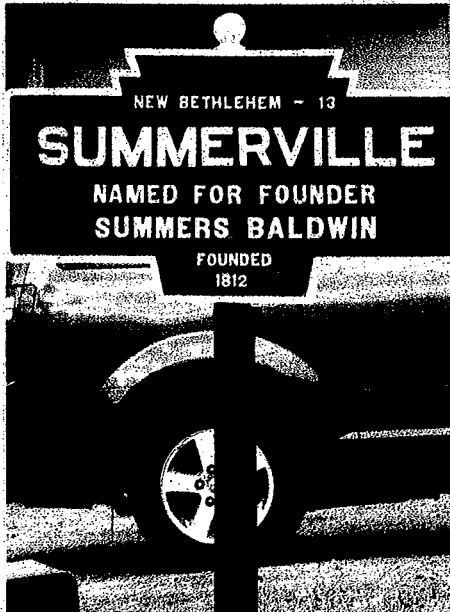
Pennsylvania is famous for its unique town names. The Keystone Markers are a uniquely Pennsylvania and decidedly distinctive way to highlight these names as well as to provide just a little snippet of history to spark interest.

When a visitor arrives in a place graced by these markers, they know they are someplace special. Essential elements in that all-important first impression for visitors and reminders of our own place in life, the Markers are exclamation points for our work to protect and enhance our world. We encourage all Pennsylvanians to use this site a resource to showcase their work to these ends.

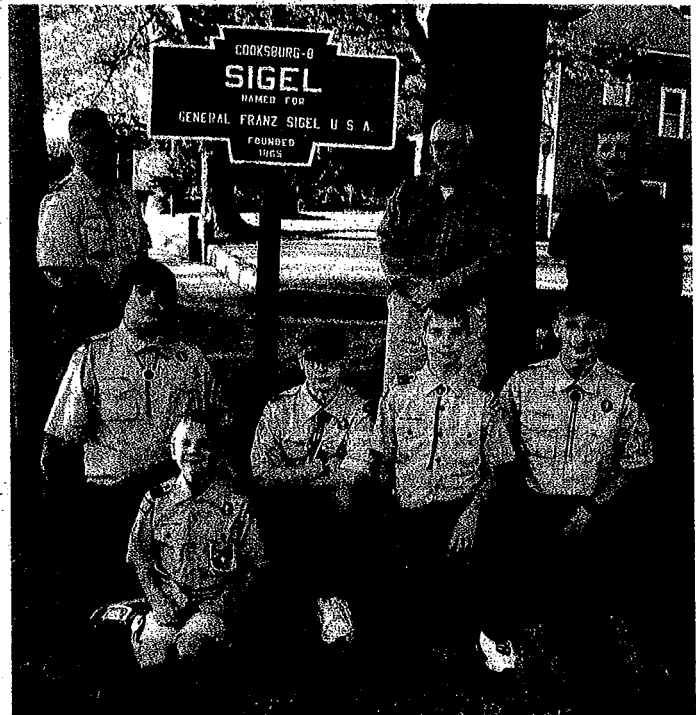
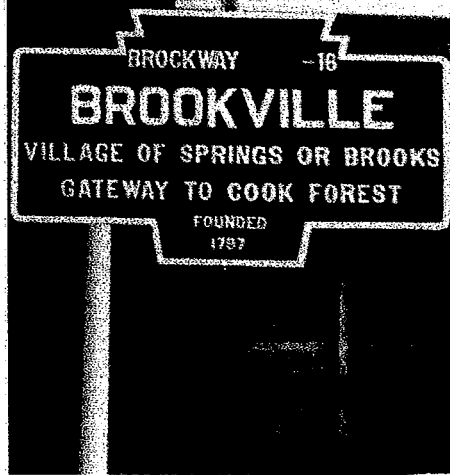
"This Marker Matters" is a campaign started by The Keystone Marker Trust to raise awareness of the importance of our historic Pennsylvania Keystone Town Markers by the people that truly care about them.

These three simple words hold within a great power to show others what a truly remarkable treasure we as Pennsylvanians have at our fingertips. These markers that have ushered in great times to each town, city and borough throughout our commonwealth now need you to help keep them alive.

The KMT is a 501(c)3 non-profit, tax exempt organization with a mission to establish a program around the markers that (1) celebrates Pennsylvania's people and places, its heritage and its future, by restoring and re-introducing these proud symbols unique to our state; and (2) creates a network of Pennsylvania communities and organizations dedicated



BACK IN SERVICE — Through the efforts of the Summerville Borough Council and volunteers, the Keystone sign has now been placed back in service on Route 28. The sign notes it is 13 miles to New Bethlehem.



SIGEL SIGN CREW — Helping to restore the Sigel roadside marker were, front row, left to right Zac Veis, Joe Polito, Justin Manns, Zak Gilbert and Dylan Manns. In the second row are Steve Manns, Jack Lingenfelter and Mike Caldwell, (Photo by Randy Bartley)

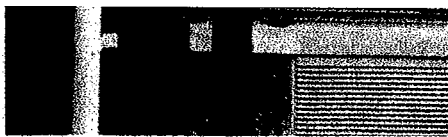


WELL TRAVELED SIGN — The photo above shows the original location of Brookville's Keystone marker on Route 36 opposite the E.U.M. Church. The marker stood for many years at the old Brookville Borough.



socially equitable.

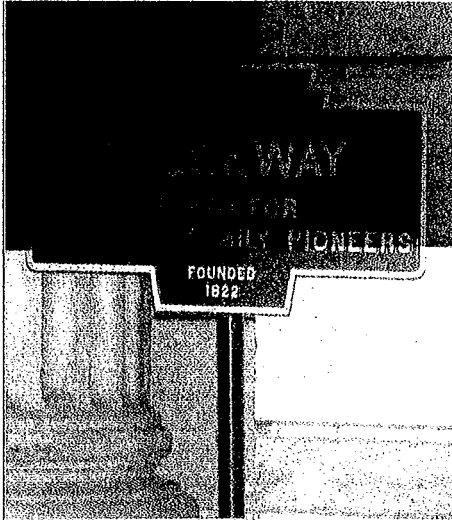
Entities dedicating themselves to the Keystone Marker Trust Principles will be able to apply for grant funding to replace and restore their Keystone Markers.



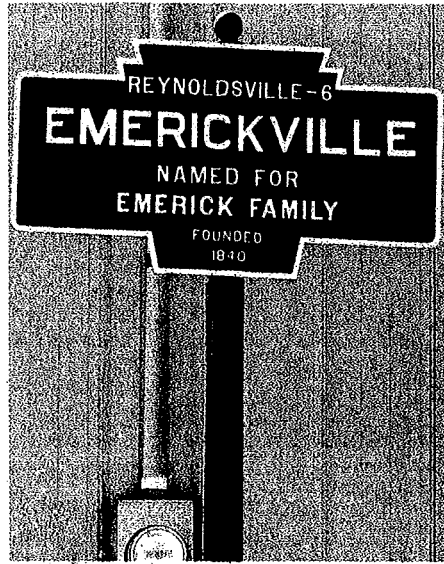
Western Avenue.

Photos by Randy Bartley

The survivors

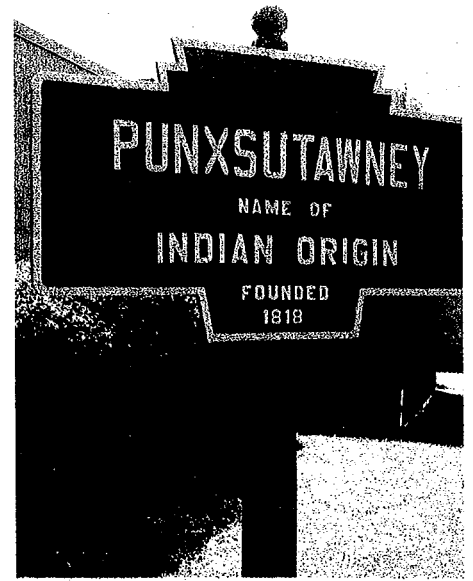


NEW LOCATION — The Keystone Marker for Brockway now stands at the town hall.



SAVED — The Keystone marker for Emerickville was moved off of Route 322 to save it. The sign now stands at the Pine Creek Township Building.

SIGEL'S SECOND SIGN — Sigel is one of the smaller communities in the state to have both of its Keystone markers in service. That was due, in part to Sigel Boy Scouts Troop 68 who set the post for the restored sign for Sigel. Left to Right: Zack Vella, Dylan Manns, Joseph Polito, Justin Manns.



ALL ORIGINAL — This Keystone marker is at the Punxsutawney Borough building. It shows the craftsmanship of the pole and notes Covode is only eight miles.

New markers available through PA. foundry

SPRING CITY — Spring City Electrical is proud to announce our partnership with the Keystone Marker Trust (KMT) to manufacture historically-accurate reproductions of Pennsylvania's iconic, century-old Keystone Markers.

Until now, no other foundry could offer accurate reproductions of these once-proud monuments to a time when Pennsylvania led the nation in industrial and technological progress.

Originally installed by PennDOT's predecessor, the Pennsylvania Department of Highways, Spring City's markers will be the first new Keystone Markers in seventy years.

The Keystone Markers celebrate Pennsylvania and all that make it unique, said Nathaniel

Guest, KMT president.

"It was through the Keystone Marker that the keystone shape became so strongly associated with our state during a time when Pennsylvania was forging its own identity as the keystone in the arch of American progress," he said.

While there were once tens of thousands of these markers denoting the entrances to all Pennsylvania towns and cities, trails, creeks, rivers, and other points of interest, today there are only about 600—with many of these in need of repair. Most towns had four markers.

Spring City, PA, home to Spring City Electrical Manufacturing, is fortunate to have one of its original four markers remaining. Spring City Electrical Manufacturing will be restoring this marker as part

of the kick-off to its Keystone Marker offerings.

"The Trust has restored about 60 markers so far; with the help of Spring City, we'll be able to do more advanced work re-installing long-gone markers," said Guest.

"By enabling towns and civic groups to restore and re-introduce these proud symbols unique to our state, we create a network of Pennsylvania communities and organizations dedicated to positive development and re-investment," said Alan Brink, president of Spring City Electrical.

"The markers create a sense of place that sets Pennsylvania apart from everywhere else—a distinction that will make people want to visit, live, and work here," he said.

New markers, including

the historic front-mount sign and post, go into production this fall, with dramatic price discounts for multiple-marker orders.

"The Keystone Marker Trust is so proud the markers will be made in Pennsylvania and especially proud that it's by a shop that epitomizes the ingenuity and craftsmanship that characterized the marker program in its heyday," said Guest. "It truly is a good sign for our state."

To order your customized Keystone Marker, please contact 610-948-4000 or twolf@springcity.com. Order online and learn more about the Keystone Markers at www.keystonemarkertrust.org.

Spring City's core business consists of cast ornamental lighting

Missing in action

Among the hundreds of missing Keystone markers are a few from our area. They may have been broken and discarded or they may be found in a garage or tucked away in a township building. If anyone knows the location of any of these markers, please contact Jack F. Invernizzi at (610) 948-4000.

According to the Keystone Marker Trust, the following signs are missing:

- Be Run
- Little Creek
- Reynoldsville
- Covode
- Brookport

You may also contact Nathaniel C. Guest at (610) 948-4000.

or
Jack Graham at
KATHLEG@YAHOO.COM